



DCARC official ELMER

Thanks Joe N7JEH

An Introduction to FT-8 using WSJT-X

- 1- How to set it up.
- 2- What else you might need for best results.
- 3- How to make a contact.

(Everything you always wanted to know but were afraid to ask!!!)

(No Radio specific setting)

Presented by Bill McGowan – KC1EO

What do we know about WSJT-X and FT8?

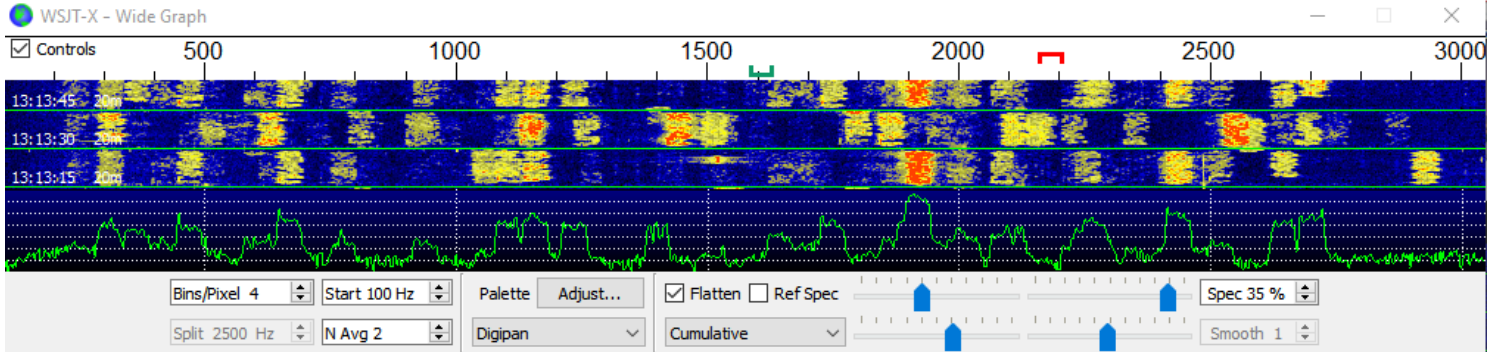
- WSJT-X was developed by Steven Franke, K9AN, and Joe Taylor K1JT in 2017 and uses 8 tone FSK modulation
- Needs accurate timing +/- 1.0 seconds to UTC*
- Shows signal strength (-26db to +30db)
- Designed for QSO's not "Rag Chewing"
- Logs contacts in ADIF format (Amateur Data Interchange Format) within the program, and can share that information, as well as decode data information with other programs.
- Generates appropriate TX messages to complete QSO
- Exchanges Grid squares as well as signal reports*
- Multiband – standardized Frequencies on all supported bands
- **Weak Signal** mode – NOT low power mode
- Computer Aided Technology – (CAT) Compliant
- 10 different modes: **FT4**, **FT8**, Most Popular for everyday operation and contests.
- JT4, JT9, JT65, QRA64, ISCAT, MSK144, WSPR, and Echo
- Fox/Hound Mode for DXPeditons

FT-8 System Requirements

- SSB transceiver and antenna
- Computer running Windows 7 or later, macOS 10.13 or later, or Linux
- 1.5 GHz or faster CPU and 200 MB of available memory; faster machines are better
- Monitor with at least 1024 x 780 resolution
- Computer-to-radio interface using a serial port or equivalent USB device for T/R switching, or **CAT** control, or VOX, as required for **your** radio-to-computer connections
- Audio input and output** devices supported by the operating system and configured for sample rate 48000 Hz, 16 bits
- Audio or equivalent USB connections between transceiver and computer
- A means for synchronizing the computer clock to UTC within ± 1 second or better*

We need **more** than WSJT-X to get the **most** from FT8

- **WSJT-X** – The main program ([WSJT Home Page \(sourceforge.io\)](http://sourceforge.io))
- **Dimension 4** or another similar program – to keep your time synced (thinkman.com/dimension4)
- **DXLabs Suite - DXKeeper** – Log your contacts and MORE (Dxlabssuite.com) *(Refer to Joe's presentation of last month)*
- **JT Alert** – (Hamapps.com) ((Almost required))
- **GridTracker** – (Gridtracker.org)
- -----
- **PSK Reporter** – (<https://pskreporter.info/pskmap.html>)
- **Groups.io** – (<https://groups.io>) Email group for FT8, Radios, etc.
- **ARRL - LoTW** - VERY helpful (arrl.org/quick-start)



WSJT-X v2.6.0 by K1JT et al.

File Configurations View Mode Decode Save Tools Help

Band Activity					Rx Frequency				
UTC	dB	DT	Freq	Message	UTC	dB	DT	Freq	Message
131330	6	-2.2	2562	UVII F5SJH IN87	131030	-13	0.1	1584	JE6WKY DU3CQ RR73 Philippines
131330	-13	0.1	1763	CQ F4JGI IN94 France	131055	Tx	2242	DU3CQ DG2YCB J042	
131330	-14	0.1	2735	HS8AFA HZ15F LL34	131130	-14	-0.1	1574	C6AGU DL6ZFG -18
131330	-6	0.2	2149	CQ SA0POW J099 Sweden	131130	-17	0.2	1584	JK3DJX DU3CQ -14
131330	-2	0.1	1448	CQ URSUX K050 Ukraine	131200	-18	0.4	1584	JK3DJX DU3CQ RR73 Philippines
131330	-13	0.2	1954	SV1GSP BX5AA RR73 Taiwan	131200	-18	-0.1	1574	C6AGU DL6ZFG -18
131330	-14	0.1	452	CQ DX F4HRG IN87 France	131230	-11	-0.1	1574	C6AGU DL6ZFG -18
131330	-13	0.1	1077	N3IZ EA7LU -05	131230	-18	0.2	1585	CQ DU3CQ PK04 Philippines
131330	-10	-0.9	808	C6AGU F4HRU JN07	131245	-18	0.8	1575	N9TF C6AGU 73 Bahamas
131330	-11	0.1	2624	UA6AHR DF1KW R+10	131330	-20	0.1	1585	VR2ZDA DU3CQ -09
131330	-19	0.1	2716	OE5EIN OV1T -09					
131330	-16	0.3	1980	PD2GCM G3DR -10					
131330	-18	0.0	484	IZ8PPI F5RPM 73 France					
131330	-13	0.1	550	DL2BS HA1VG JN87					
131330	-17	0.1	543	N0FW PD2SHB J021					
131330	-21	-0.0	2091	CQ EA1EAS IN70 a7 Spain					
131330	-5	-0.2	1129	CQ R7BL LN06 a7 EU Russia					
----- 20m -----									
131345	7	0.1	2416	CQ ES1KK K029 Estonia					
131345	6	0.2	1137	F6ARS HA3PT R+14					
131345	6	-0.1	2680	RC1BP <UE23NY> -12					
131345	16	0.2	1897	VU2RS LY3AB K005					
131345	2	0.1	2624	DF1KW UA6AHR RR73 EU Russia					
131345	2	0.2	1215	YC1LIN SV1FA KM18					
131345	3	0.4	1084	DK1AN EA3IGB -05					
131345	2	0.1	2251	E74K YO2NAA KN05					
131345	5	0.2	648	CQ DX LA6ZFA J059 Norway					

CQ only Log QSO Stop Menus

20m S 14,074 000 Tx even/1st Hold Tx Freq

Tx 2160 Hz

Rx 1584 Hz

Report -13 Auto Seq CQ: None

H DX Call DX Grid

FT8 DU3CQ

FT4

MSK

Q65

JT65

2022 Dez 29 13:13:57

Generate Std Msgs

Next	Now	Pwr
DU3CQ DG2YCB JO42	<input checked="" type="radio"/> Tx 1	
DU3CQ DG2YCB -13	<input type="radio"/> Tx 2	
DU3CQ DG2YCB R-13	<input type="radio"/> Tx 3	
DU3CQ DG2YCB RR73	<input type="radio"/> Tx 4	
DU3CQ DG2YCB 73	<input type="radio"/> Tx 5	
CQ DG2YCB JO42	<input type="radio"/> Tx 6	

Receiving DG2YCB FT8 13 12/15 WD:3m

WSJT-X v2.6.0 by K1JT et al.

File Configurations View Mode Decode Save Tools Help

Band Activity

UTC	dB	DT	Freq	Message

Rx Frequency

UTC	dB	DT	Freq	Message

CQ only

 Menus

20m| ●

29 dB

14.074 000

Tx even/1st
 Hold Tx Freq

Tx 1251 Hz

Rx 1072 Hz

Report -15

Auto Seq

Generate Std Msgs	Next	Now	Pwr
W9XYZ K1ABC FN20	<input type="radio"/>	Tx 1	
W9XYZ K1ABC -15	<input type="radio"/>	Tx 2	
W9XYZ K1ABC R-15	<input type="radio"/>	Tx 3	
W9XYZ K1ABC RR7	<input type="radio"/>	Tx 4	
W9XYZ K1ABC :	<input type="radio"/>	Tx 5	
CQ K1ABC FN20	<input checked="" type="radio"/>	Tx 6	

H DX Call DX Grid

FT8 W9XYZ EN37

FT4 Az: 305 1668 km

MSK

Q65 2022 Dec 29

JT65 18:02:28

Receiving

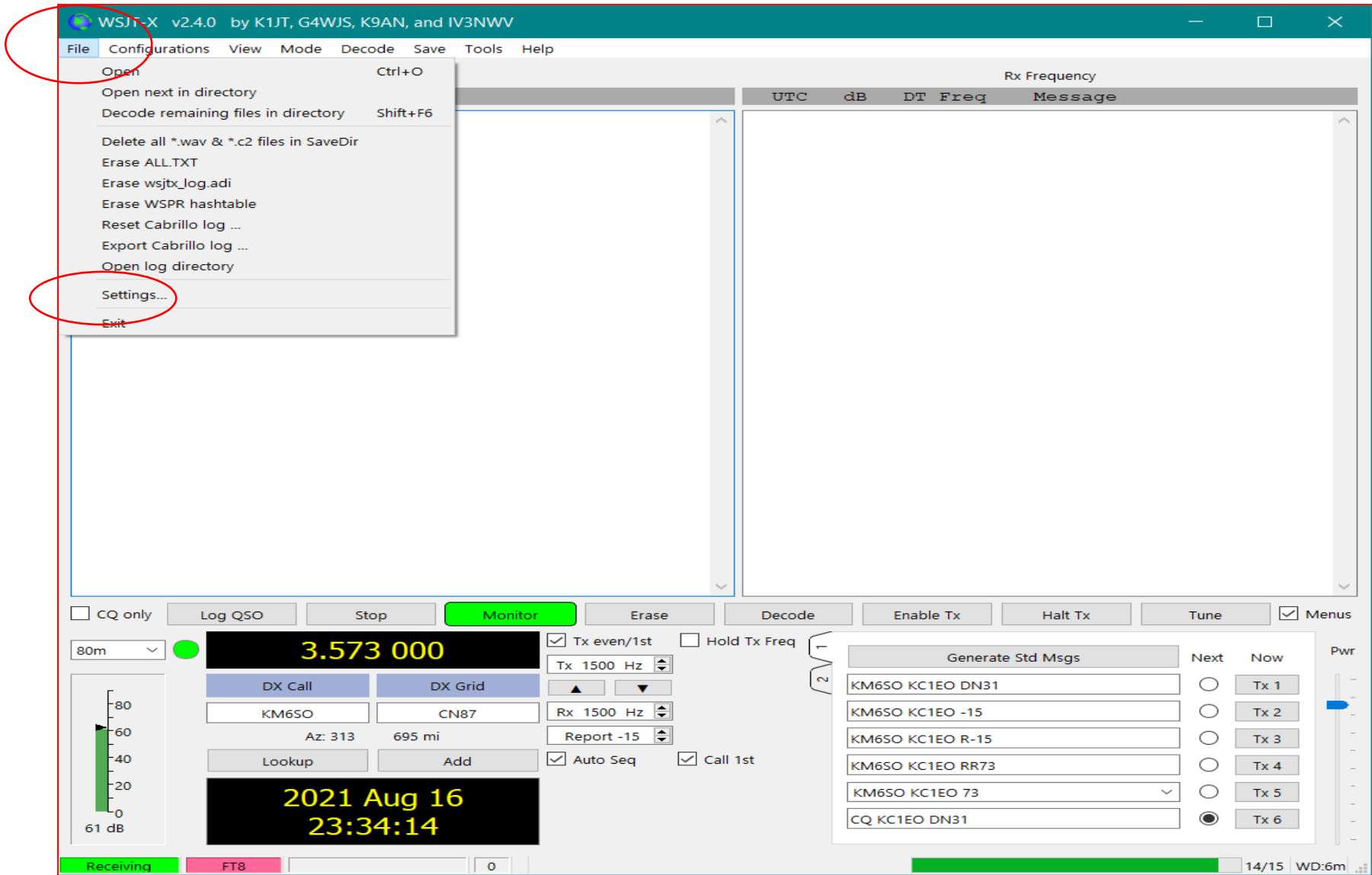
FT8

FT8

13/15

WD:6m

Settings changes take place on the following tabs.



General Radio Audio Tx Macros Reporting Frequencies Colors Advanced

Station Details

My Call: My Grid: AutoGrid IARU Region:
Message generation for type 2 compound callsign holders:

Display

Start new period decodes at top
 Blank line between decoding periods
 Display distance in miles
 Tx messages to Rx frequency window
 Show DXCC, grid, and worked-before status Show principal prefix instead of country name

Behavior

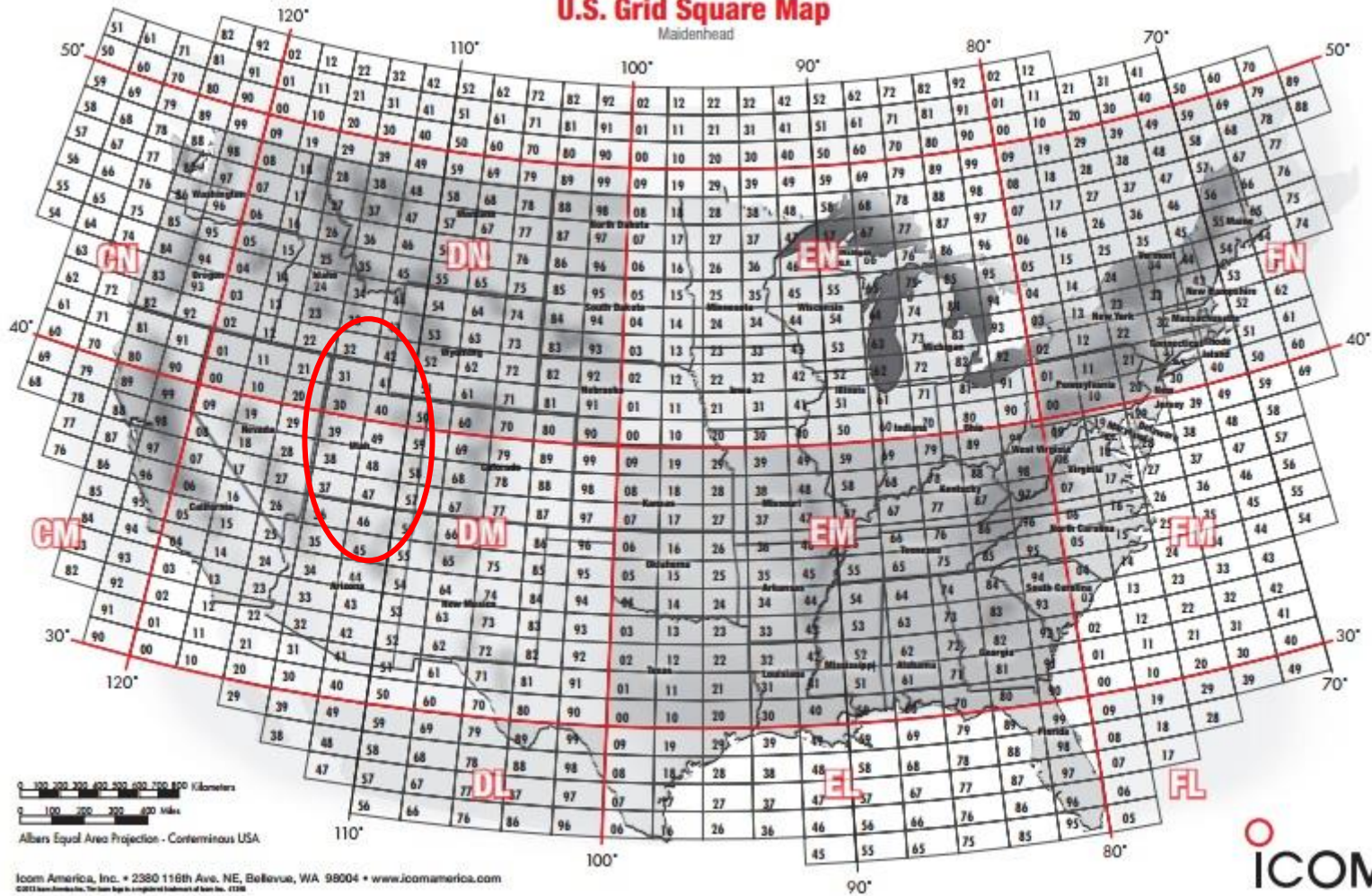
Monitor off at startup Enable VHF and submode features
 Monitor returns to last used frequency Allow Tx frequency changes while transmitting
 Double-click on call sets Tx enable Single decode
 Disable Tx after sending 73 Decode after EME delay
 Calling CQ forces Call 1st
 Alternate F1-F6 bindings Tx watchdog:
 CW ID after 73 Periodic CW ID Interval:

OK

Cancel

U.S. Grid Square Map

Maidenhead



0 100 200 300 400 500 600 700 800 Kilometers

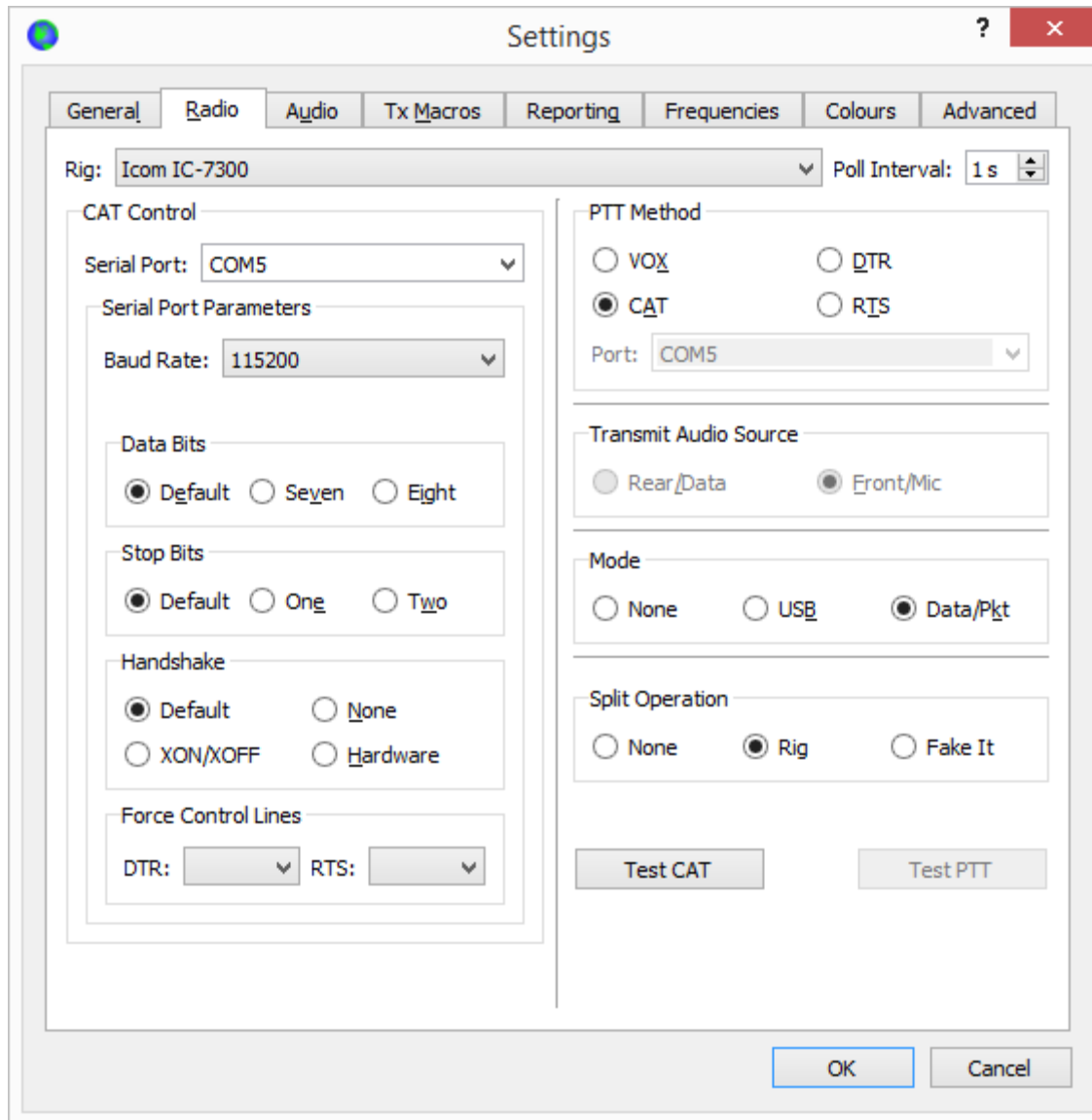
0 100 200 300 400 Miles

Albers Equal Area Projection - Conterminous USA

Icom America, Inc. • 2380 116th Ave. NE, Bellevue, WA 98004 • www.icomamerica.com

©2011 Icom America, Inc. The Icom logo is a registered trademark of Icom Inc. ©2010

ICOM



General Radio **Audio** Tx Macros Reporting Frequencies Colors Advanced

Soundcard

Input: Microphone (2- USB Audio CODEC) Mono

Output: Speakers (2- USB Audio CODEC) Mono

Save Directory

Location: C:/Users/wmcgo/AppData/Local/WSJT-X/save Select

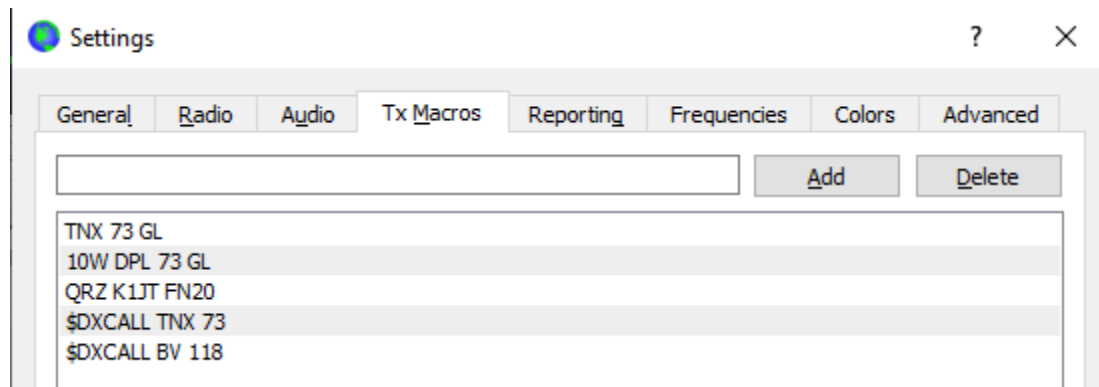
AzEl Directory

Location: C:/Users/wmcgo/AppData/Local/WSJT-X Select

Remember power settings by band

Transmit Tune

OK Cancel



General Radio Audio Tx Macros **Reporting** Frequencies Colors Advanced

Logging

- Prompt me to log QSO
- Log automatically (contesting only)
- Convert mode to RTTY
- dB reports to comments
- Clear DX call and grid after logging

Op Call:

Network Services

- Enable PSK Reporter Spotting
- Use TCP/IP connection

UDP Server

- UDP Server: Accept UDP requests
- UDP Server port number: Notify on accepted UDP request
- Accepted UDP request restores window

Secondary UDP Server (deprecated)

- Enable logged contact ADIF broadcast
- Server name or IP address:
- Server port number:

OK Cancel

Settings

General | Radio | Audio | Tx Macros | Reporting | **Frequencies** | Colors | Advanced

Frequency Calibration

Slope: 0.0000 ppm Intercept: 0.00 Hz

Working Frequencies

IARU Region	Mode	Frequency	Pref	Description	Start Date/Time
All	FT4	10.140 000 MHz (30m)	<input type="checkbox"/>		
All	FT8	14.074 000 MHz (20m)	<input checked="" type="checkbox"/>		
All	JT65	14.076 000 MHz (20m)	<input type="checkbox"/>		
All	JT9	14.078 000 MHz (20m)	<input type="checkbox"/>		
All	FT4	14.080 000 MHz (20m)	<input type="checkbox"/>		
All	FT8	14.090 000 MHz (20m)	<input type="checkbox"/>	ARRL Contest	

Station Information

Band	Offset	Antenna Description
6m	0.000 000 MHz	7 el at 85 ft
2m	0.000 000 MHz	4 x 14 el Xpol
3cm	-10,224.000 000 MHz	2 m offset dish

Settings

General | Radio | Audio | Tx Macros | Reporting | Frequencies | Colors | Advanced

Decode Highlighting

- My Call in message [f/g unset]
- New Continent [f/g unset]
- New Continent on Band [f/g unset]
- New CQ Zone [f/g unset]
- New CQ Zone on Band [f/g unset]
- New ITU Zone [f/g unset]
- New ITU Zone on Band [f/g unset]
- New DXCC [f/g unset]
- New DXCC on Band [f/g unset]
- New Grid [f/g unset]
- New Grid on Band [f/g unset]

Reset Highlighting

Highlight by Mode Rescan ADIF Log

Only grid Fields sought

Include extra WAE entities

Highlight also messages with 73 or RR73

Logbook of the World User Validation

Users CSV file URL: Fetch Now

Age of last upload less than: Controls for Logbook of the World user lookup.

OK Cancel

Settings

General Radio Audio Tx Macros Reporting Frequencies Colors Advanced

JT65 VHF/UHF/Microwave decoding parameters

Random erasure patterns: 6

Aggressive decoding level: 0

Two-pass decoding

Miscellaneous

Degrade S/N of .wav file: 0.0 dB

Receiver bandwidth: 2500 Hz

Tx delay: 0.2 s

Tone spacing

x 2 x 4

Waterfall spectra

Low sidelobes Most sensitive

Special operating activity

Fox Hound

NA VHF ARRL Field Day FD Exch: 6A SNJ

EU VHF Contest FT Roundup FT RU Exch: NJ

WW Digi Contest ARRL Digi Contest

CQ with individual contest name Contest name: PACC

OK Cancel

21:44:02 - Dimension 4

Server

Server	Location	Protocol
utcnist.colorado.edu	US CO: JILA Laboratory, Universi...	SNTP
time.nist.gov	US CO: National Center for Atmo...	SNTP
time-a.timefreq.bldr...	US CO: NIST Boulder Laboratori...	SNTP
time-h.timefren.bldr	US CO: NIST Boulder Laboratori...	SNTP

Server:

Location:

Protocol:

Notes:

How Often

Load Dimension 4 at startup

Once loaded, wait until online

Synchronize once, then exit

Every

Correction

Maximum correction

Visibility

Start minimized

Hide when minimized

Display icon in tray

Synchronized:

Current Status:

Server Status:



Log QSOs QSL Check Progress my QTHs Import QSOs Export QSOs

QSO: United States (1:00)

call name QTH
 mode via tx freq begin
 sent rcvd tx band rx freq end
 power code DXCC entity

- Auxiliary
- QSL
- Online QSL
- Award
- Contest
- Propagatic
- Details
- User-defin

QSL

sent date sent sent via IOTA vfy WAS vfy WPX vfy
 rcvd date rcvd rcvd via VUCC vfy WAZ vfy
 QSL#
 msg addr
 myQTH

- key QSL Sent
- N - do
 - R - rec
 - Y - per
 - I - do
- QSL Rcv
- R - rec
 - Y - co
 - S - put
 - V - ver
 - I - in

Online QSL

eQSL.cc LoTW

sent date sent
 rcvd date rcvd
 member

sent date sent
 rcvd date rcvd
 cfm member

Award

SOTA IOTA cont WPX CQ ITU
 ARRL state county
 Zone Risk Country Risk grid 1 2 3 4

New Edit Undo CBA Delete Report Plot 5279 Adv RAT Capture Config Help

Call	DXCC	Starting UTC	Band	Mode	Sent	Rcvd
KD9NJR	K	9/23/2021 23:40	20M	FT8	+06	-16
N5TXL	K	9/23/2021 23:43	20M	FT8	+05	-12
KG5JJ	K	9/24/2021 03:47	80M	FT8	+03	-15
N7ZZE	K	9/24/2021 03:52	80M	FT8	-05	-16
AB8OU	K	9/24/2021 03:57	40M	FT8	-05	-13
W5MZX	K	9/24/2021 04:10	40M	FT8	+06	-14
W5LAC	K	9/24/2021 04:21	30M	FT8	+05	-14
N5KUC	K	9/24/2021 13:44	40M	FT8	-09	-14
KO4RQN	K	9/24/2021 13:55	30M	FT8	-12	-19
WD0J	K	9/24/2021 14:12	30M	FT8	-03	+03
K3CWE	K	9/24/2021 14:16	30M	FT8	-19	-17
KA3UJE	K	9/24/2021 14:18	30M	FT8	-13	-10
K5SBD	K	9/24/2021 14:21	20M	FT8	+08	-11

Sort: Starting UTC

Filter: None

UTC Call User X Call DXCC Date Since Sel LoTW Broke ~

THE ARRL

LOGBOOK



OF THE WORLD™

YAESU

The radio

**PRINCIPAL
SPONSOR**

of the LoTW Website

[New Query](#)

25 Records Shown (1-25)

Sorted by QSO Date (0.005168 seconds elapsed)

	Call sign	Worked	Date/Time	Band	Mode	Freq	QSL
Details	KC1EO	W1WSF	2023-10-30 13:57:15	17M	FT8	18.10120	UNITED STATES OF AMERICA
Details	KC1EO	KE3ZT	2023-10-30 13:49:45	20M	FT8	14.07523	UNITED STATES OF AMERICA
Details	KC1EO	KC1QYD	2023-10-30 13:47:00	20M	FT8	14.07523	
Details	KC1EO	KB8YTD	2023-10-30 13:42:15	30M	FT8	10.13713	UNITED STATES OF AMERICA
Details	KC1EO	KT7N	2023-10-30 13:38:30	40M	FT8	7.07510	
Details	KC1EO	K5CM	2023-10-30 13:37:00	40M	FT8	7.07510	
Details	KC1EO	K1LEC	2023-10-30 13:32:45	40M	FT8	7.07510	UNITED STATES OF AMERICA
Details	KC1EO	KD5ZLR	2023-10-30 13:31:45	40M	FT8	7.07510	UNITED STATES OF AMERICA
Details	KC1EO	KQ0Q	2023-10-30 13:29:45	40M	FT8	7.07510	UNITED STATES OF AMERICA
Details	KC1EO	K4TER	2023-10-29 14:09:15	20M	FT8	14.07520	UNITED STATES OF AMERICA
Details	KC1EO	K5LVC	2023-10-29 14:04:45	20M	FT8	14.07510	
Details	KC1EO	VE3UIN	2023-10-29 14:03:45	20M	FT8	14.07510	
Details	KC1EO	KO4DBP	2023-10-29 14:01:15	20M	FT8	14.07510	UNITED STATES OF AMERICA
Details	KC1EO	JM8BPM	2023-10-29 13:54:45	30M	FT8	10.13750	
Details	KC1EO	N7BFO	2023-10-29 13:51:45	30M	FT8	10.13750	UNITED STATES OF AMERICA
Details	KC1EO	7N4WPY	2023-10-29 13:45:15	40M	FT8	7.07547	JAPAN
Details	KC1EO	JH7AUL	2023-10-29 13:41:45	40M	FT8	7.07547	JAPAN
Details	KC1EO	AA0HJ	2023-10-29 13:41:00	40M	FT8	7.07547	UNITED STATES OF AMERICA
Details	KC1EO	K0KDO	2023-10-29 13:38:45	40M	FT8	7.07547	
Details	KC1EO	JQ7BQT	2023-10-29 13:37:00	40M	FT8	7.07547	JAPAN
Details	KC1EO	N7CEE	2023-10-29 13:36:56	40M	FT8	7.07547	
Details	KC1EO	JA1QOW	2023-10-29 13:33:15	40M	FT8	7.07547	
Details	KC1EO	N0NIY	2023-10-29 13:28:00	40M	FT8	7.07540	UNITED STATES OF AMERICA
Details	KC1EO	KJ7ZHG	2023-10-29 13:26:00	40M	FT8	7.07540	
Details	KC1EO	JO4JDU	2023-10-29 01:59:00	17M	FT8	18.10140	

[Next](#)

Most recent QSO record received 2023-10-30 14:10:51Z

Select QSOs to List		Submit Query Form
Call sign worked:	<input type="text"/>	<input type="button" value="Submit"/>
Your call sign:	- Any - <input type="text"/>	Common Queries

Your Logbook DXCC Account (KC1EO - UNITED STATES OF AMERICA)

Account Status

DXCC Award	New LoTW QSLs	LoTW QSLs in Process	DXCC Credits Awarded	Total (All)	Total (Current)
Mixed *	19	0	252	271	266
CW	0	0	12	12	12
Phone	15	0	245	260	255
Digital	103	0	0	103	103
80M	6	0	2	8	8
40M	42	0	2	44	44
30M	77	0	0	77	77
20M	57	0	106	163	159
17M	53	0	0	53	53
15M	50	0	110	160	160
12M	6	0	0	6	6
10M	62	0	92	154	151
Challenge	353	0	305	---	658

* = Award has been issued

[View Award Credit Matrix](#)

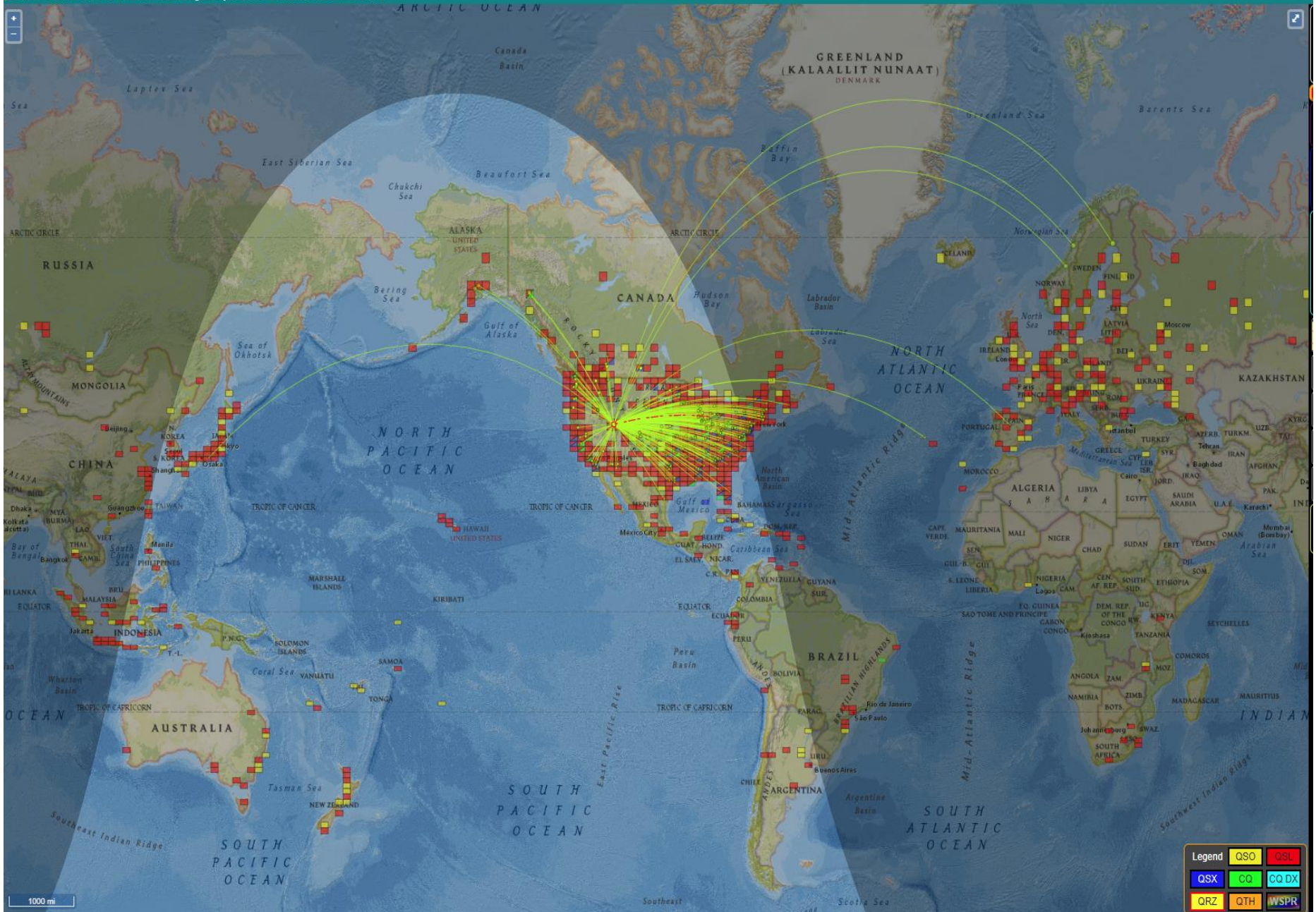
This account includes credits for the following:

KC1EO - UNITED STATES OF AMERICA
 This account is linked with DXCC record:

William McGowan, KC1EO

Notes

- Click on the **Awards** item in the menu at the top of the page to select a different LoTW award account.
- You can click on the links in the Account Status table to view the credit list for an individual award.
- When you are ready to apply your LoTW credits to your DXCC record, use [Application](#)
- To view the present and past applications you have submitted, use [Application History](#).
- For an ADIF download with the details of all QSLs in your DXCC record use [DXCC QSL Download](#).



PSK Reporter screen shot



WSJT-X v2.4.0 by K1JT, G4WJS, K9AN, and IV3NWW

File Configurations View Mode Decode Save Tools Help

Band Activity

UTC	dB	DT	Freq	Message
----- 20m				
223900	-7	0.4	1710	~ YS1JW N5XFW -12
223900	0	0.5	1075	~ DL2LI NL7XT +15
223900	4	0.1	1183	~ EA1IEQ VE3WVX EN93
223900	-12	0.4	1518	~ KJ7ZPJ K4EWR FM18
223900	3	0.5	1820	~ HA3FFR NY4NC 73
223900	-3	0.4	1997	~ 5X3R KFO XU RR73
223900	12	0.4	2061	~ CQ N3UPY EN90 U.S.A.
223900	-3	0.4	1262	~ DD1UN N8GZ EN90
223900	-3	0.8	917	~ CQ WB4YTG EL49 U.S.A.
223900	-5	0.4	2181	~ I21JMN KI5FTB EM40
223900	-11	1.0	703	~ KB0DEU KF4RAF EM60
223900	-5	0.4	497	~ KJ7RGW KB4SGA -15
223900	11	0.4	2089	~ CQ VE3BTT EN82 Canada
223900	-5	0.4	1953	~ CQ HC5T FI07 CQ Zone
223900	-5	0.4	1287	~ NK0V KZ2T EM15
223900	-6	0.8	1777	~ W7CFR KE8OSX -17
223900	-15	0.4	694	~ DL2LI N7WFK EM15
223900	-16	0.4	2198	~ W0JNH I8OCA R-14
223900	-8	0.3	1794	~ AK9B CT1DIZ -14
223900	-5	1.4	801	~ CQ VE3EJP FN14 Canada
223900	-5	0.6	2121	~ IK4LZH N9YBA RRR

Rx Frequency

UTC	dB	DT	Freq	Message
-----	----	----	------	---------

CQ only Log QSO Stop Monitor Erase Decode Enable Tx Halt Tx Tune Menus

20m

14.074 000

DX Call

DX Grid

W9RJ

EN60

Az: 83 1315 mi

Lookup

Add

2021 Aug 15

22:39:17

Tx even/1st Hold Tx Freq

Tx 1452 Hz

▲ ▼

Rx 1452 Hz

▲ ▼

Report -15

▲ ▼

Auto Seq Call 1st

Generate Std Msgs

Next	Now	Pwr
W9RJ KC1EO DN31	<input type="radio"/>	Tx 1
W9RJ KC1EO -15	<input type="radio"/>	Tx 2
W9RJ KC1EO R-15	<input type="radio"/>	Tx 3
W9RJ KC1EO RR73	<input type="radio"/>	Tx 4
W9RJ KC1EO 73	<input type="radio"/>	Tx 5
CQ KC1EO DN31	<input checked="" type="radio"/>	Tx 6

Receiving

FT8

21

2/15 WD:5m

There is A LOT going on.
 You have to decide who's
 CQ you want to return.
 Have you worked them B4?
 How strong are they to your
 QTH?

Do you need them for a
 Prefix or DXCC or WAS?
 You have 15 seconds to
 decide tick..tick..tick..

TIMES UP!!!!!!!!!!

Can we do anything to
 help us decide??????????
 Easiest way is to reduce
 the number of decodes
 you see by checking the
 "CQ only box.....OR.....use
 the "JT Alert" program

JT Alert

Helps make better informed decisions quickly. Incoming calls can be sorted by "Signal Strength", countries and US counties are identified as well as needed prefixes.

Strong SNR decodes

KF9UG B4 +09 U.S.A. IN	N4ZZ TN +06 U.S.A. TN	JG2CNZ +01 Japan	W9YSX B4 +01 U.S.A. IN
W2IRT NJ DX +01 U.S.A. NJ	JA4EPE 00 Japan	KC3Y PA CQ 00 U.S.A. PA	JJ3JHP -01 Japan
KQ4LQL 73 -02 U.S.A.	K4WLG KY -02 U.S.A. KY	KB7RUQ UT -02 U.S.A. UT	KJ8H OH 73 -04 U.S.A. OH
NN4R AL -05 U.S.A. AL	K4ZO NC -05 U.S.A. NC	JA7OZW -05 Japan	JH6RKI -05 Japan
JA0UH -05 Japan	JA0FMU -07 Japan	WA4TED TN -07 U.S.A. TN	JE1LET -07 Japan
KY4CRC KY -07 U.S.A. KY	KB8FLI AR -08 U.S.A. AR	JA0KNM -08 Japan	JA0DAI -09 Japan
JJ1RDX -09 Japan	W4AFB FL -10 U.S.A. FL	J10VIF -11 Japan	JR1BAS -11 Japan
JF1JEQ -12 Japan	W4GHW GA -12 U.S.A. GA	WA6EZV OH -12 U.S.A. OH	JR8ALJ -13 Japan
JK2XJE -13 Japan	ND4X KY -13 U.S.A. KY	KS40T B4 73 -14 U.S.A. GA	N6RW AZ -14 U.S.A. AZ

Callers : Alert

Alerts Only

JK2XJE
-13 Japan

QSO in process

Data Activity					Data Frequency				
UTC	dB	DT	Freq	Message	UTC	dB	DT	Freq	Message
----- 40m -----									
043400	15	0.2	797	~ CQ AK9B DM61 U.S.A.	043130	4	0.4	871	~ CQ PT7ZZ HI06 CQ
043400	3	-0.1	584	~ W4NRG XE2JS RR73	043148	Tx		871	~ PT7ZZ KC1EO DN31
043400	4	-1.4	1593	~ K7NWT KD9OFJ 73	043200	-7	0.4	871	~ CQ PT7ZZ HI06 CQ
043400	3	0.5	1298	~ CQ KI6NAZ DM03 U.S.A.	043215	Tx		871	~ PT7ZZ KC1EO DN31
043400	6	0.1	2050	~ N0POH KD2QAR FN02	043230	-5	0.4	870	~ CQ PT7ZZ HI06 CQ
043400	0	-0.1	1689	~ LY1CX K9TF EN63	043230	8	0.1	797	~ CQ AK9B DM61 U.S.
043400	-3	0.2	2250	~ CQ DX KO4DCR EL98 U.S.A.	043245	Tx		797	~ AK9B KC1EO DN31
043400	-7	0.7	1492	~ CQ VE3ELL FN04 Canada	043300	15	0.1	797	~ KC1EO AK9B -13
043400	1	0.2	1385	~ CQ N0YEP EN33 U.S.A.	043315	Tx		797	~ AK9B KC1EO R+15
043400	0	0.1	2117	~ SP1MGM KG4AKV -16	043330	6	0.1	797	~ KC1EO AK9B RR73
043400	-4	0.9	1001	~ W0L W1BUS CN85	043345	Tx		797	~ AK9B KC1EO 73
043400	-7	0.2	1780	~ CQ EA7CK IM76 CQ Zone	043400	15	0.2	797	~ CQ AK9B DM61 U.S.
043400	5	0.1	1931	~ CQ DX N9TNY EN51 U.S.A.					
043400	-1	0.4	2168	~ KB6OQJ F5LOW -14					
043400	4	0.2	1953	~ <S5030XX> KU0G EM38					
043400	-1	0.1	748	~ G6MND KB9JJA EM48					
043400	-15	0.1	692	~ ZL1VAH WA6GXQ FM06					
043400	-6	0.2	1386	~ M3FON N4MEC FM06					
043400	-14	0.2	1557	~ N0POH K4NDN FM08					
043400	-22	0.1	480	~ <...> KN4JCD R-15					
043400	-18	0.2	1544	~ XE1YO YS1RS -09					
043400	-17	0.3	2637	~ CQ W7OK CN86 U.S.A.					

Here is a typical QSO

- AK9B calls CQ with callsign and grid.
- KC1EO answers with call sign and grid
- AK9B responds with signal report
- KC1EO returns signal report
- AK9B sends RR73
- KC1EO sends 73
- AK9B sends CQ looking for next QSO

How do we make a contact (Search and Pounce or Call CQ or Fox/Hound)

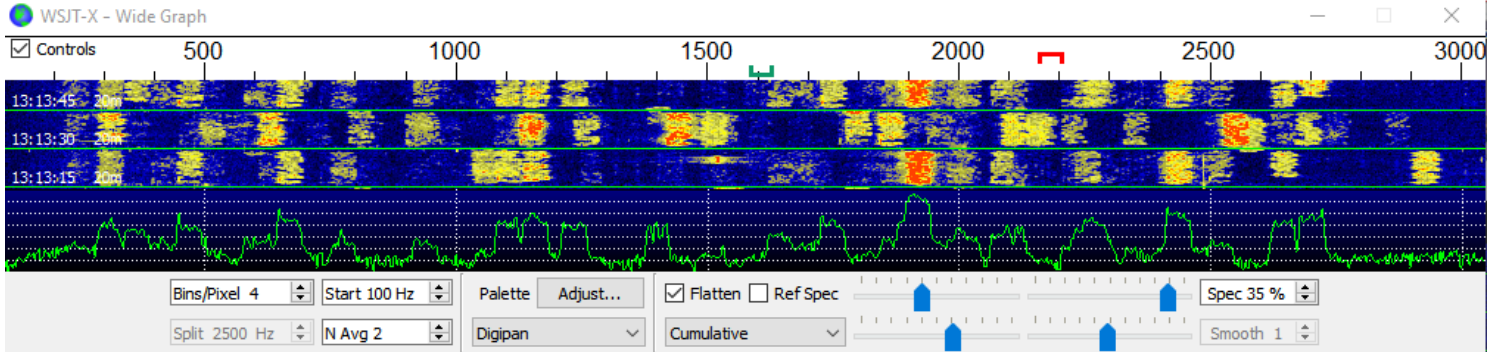
Search and Pounce – Easy Peasy!!! Double click on either the “WSJT-X” call you want to work or “JT-Alert” Callsign box

Calling CQ

Calling CQ is a bit more involved initially. Find an unused frequency. Move both the Red and Green frequency marker to the unused space on the waterfall. Move the Red marker by holding down the Shift key while clicking. . Move the Green Marker by clicking on the same open space. Next, click the TX6 radio button. Now merely select Enable TX on the menu bar located above the “Generate Standard messages” line on the main screen.

Fox and Hound Mode Operation -Typically DXPeditions

- Select the “H” on the lower half of the WSJT-X screen to select “HOUND” mode
- Set Transmit (**Red** goal post) to any frequency that is clear, but must be ABOVE 1000 on the Waterfall.
- Enter the DX’s call into the DX Call box
- Select “Generate Standard Messages
- Click on Enable Transmit



WSJT-X v2.6.0 by K1JT et al.

File Configurations View Mode Decode Save Tools Help

Band Activity					Rx Frequency				
UTC	dB	DT	Freq	Message	UTC	dB	DT	Freq	Message
131330	6	-2.2	2562	UVII F5SJH IN87	131030	-13	0.1	1584	JE6WKY DU3CQ RR73 Philippines
131330	-13	0.1	1763	CQ F4JGI IN94 France	131055	Tx	2242	DU3CQ DG2YCB J042	
131330	-14	0.1	2735	HS8AFA HZ15F LL34	131130	-14	-0.1	1574	C6AGU DL6ZFG -18
131330	-6	0.2	2149	CQ SA0POW J099 Sweden	131130	-17	0.2	1584	JK3DJX DU3CQ -14
131330	-2	0.1	1448	CQ URSUX K050 Ukraine	131200	-18	0.4	1584	JK3DJX DU3CQ RR73 Philippines
131330	-13	0.2	1954	SV1GSP BX5AA RR73 Taiwan	131200	-18	-0.1	1574	C6AGU DL6ZFG -18
131330	-14	0.1	452	CQ DX F4HRG IN87 France	131230	-11	-0.1	1574	C6AGU DL6ZFG -18
131330	-13	0.1	1077	N3IZ EA7LU -05	131230	-18	0.2	1585	CQ DU3CQ PK04 Philippines
131330	-10	-0.9	808	C6AGU F4HRU JN07	131245	-18	0.8	1575	N9TF C6AGU 73 Bahamas
131330	-11	0.1	2624	UA6AHR DF1KW R+10	131330	-20	0.1	1585	VR2ZDA DU3CQ -09
131330	-19	0.1	2716	OE5EIN OV1T -09					
131330	-16	0.3	1980	PD2GCM G3DR -10					
131330	-18	0.0	484	IZ8PPI F5RPM 73 France					
131330	-13	0.1	550	DL2BS HA1VG JN87					
131330	-17	0.1	543	N0FW PD2SHB J021					
131330	-21	-0.0	2091	CQ EA1EAS IN70 a7 Spain					
131330	-5	-0.2	1129	CQ R7BL LN06 a7 EU Russia					
----- 20m -----									
131345	7	0.1	2416	CQ ES1KK K029 Estonia					
131345	6	0.2	1137	F6ARS HA3PT R+14					
131345	6	-0.1	2680	RC1BP <UE23NY> -12					
131345	16	0.2	1897	VU2RS LY3AB K005					
131345	2	0.1	2624	DF1KW UA6AHR RR73 EU Russia					
131345	2	0.2	1215	YC1LIN SV1FA KM18					
131345	3	0.4	1084	DK1AN EA3IGB -05					
131345	2	0.1	2251	E74K YO2NAA KN05					
131345	5	0.2	648	CQ DX LA6ZFA J059 Norway					

CQ only
 Log QSO

 Menus

20m S 14,074 000
 Tx even/1st Hold Tx Freq

Tx 2160 Hz
 Rx 1584 Hz
 Report -13

Auto Seq CQ: None

H DX Call DX Grid

FT8 DU3CQ

FT4

MSK

Q65

JT65

2022 Dez 29
13:13:57

Generate Std Msgs

Next	Now	Pwr
DU3CQ DG2YCB JO42	<input checked="" type="radio"/> Tx 1	
DU3CQ DG2YCB -13	<input type="radio"/> Tx 2	
DU3CQ DG2YCB R-13	<input type="radio"/> Tx 3	
DU3CQ DG2YCB RR73	<input type="radio"/> Tx 4	
DU3CQ DG2YCB 73	<input type="radio"/> Tx 5	
CQ DG2YCB JO42	<input type="radio"/> Tx 6	

Receiving
DG2YCB
FT8
13
12/15 WD:3m

WSJT-X v2.6.0 by K1JT et al.

File Configurations View Mode Decode Save Tools Help

Band Activity

UTC	dB	DT	Freq	Message

Rx Frequency

UTC	dB	DT	Freq	Message

CQ only

 Menus

20m | ●

29 dB

14.074 000

Tx even/1st Hold Tx Freq

Tx 1251 Hz

Rx 1072 Hz

Report -15

Auto Seq CQ: None

Generate Std Msgs

Next	Now
W9XYZ K1ABC FN20	<input type="radio"/> Tx 1
W9XYZ K1ABC -15	<input type="radio"/> Tx 2
W9XYZ K1ABC R-15	<input type="radio"/> Tx 3
W9XYZ K1ABC RR7:	<input type="radio"/> Tx 4
W9XYZ K1ABC :	<input type="radio"/> Tx 5
CQ K1ABC FN20	<input checked="" type="radio"/> Tx 6

Pwr

Receiving

FT8

FT8

13/15

WD:6m

Summary –

1 - We've reviewed what kind of hardware (radio) you need to run the program

2 - We've reviewed what hardware (computer) you need to run the program

3 - We've reviewed what ancillary programs are useful when running the program.

4 - We've reviewed the initial settings on WSJT-X as to how to set up the program – but.....RTFM - [wsjtx-main-2.6.1.pdf \(sourceforge.io\)](#)

5 - We've reviewed the main WSJT-X screen and identified major sections

6 - We've reviewed "How to call "CQ" or answer "CQ"

Questions

????????